

building value in air

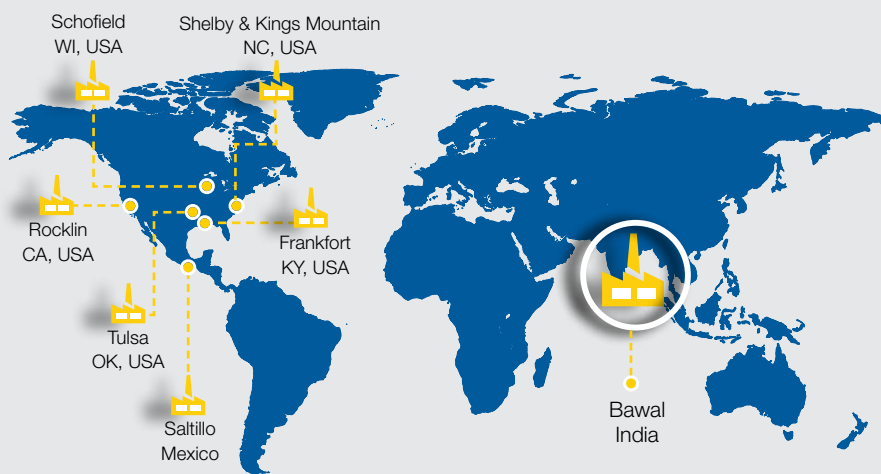
WORLDWIDE



 **GREENHECK**
Building Value in Air.

Our Commitment

Greenheck is the Global Leader in the manufacture of air movement and control equipment for non-residential buildings. The products we engineer and manufacture improve the quality and comfort of indoor air for people inside hospitals, schools, office buildings, libraries, restaurants, hotels, shopping malls, industrial plants, warehouses and any other type of commercial building that requires ventilation. Our employees around the world take pride in being “the easiest company to do business with,” and strive to create new products that save energy, perform better, install easily and require less maintenance.



3,700+
people



7
Manufacturing locations

1
Unwavering commitment

Located in the National Capital Region of India, Bawal is a municipality of the Rewari district in the state of Haryana and is strategically located along National Highway 8 about 100 km from Delhi. Greenheck India Private Ltd. began operations in Bawal, India in December 2013 in a 67,000 square foot facility. With an ever-growing demand for our products internationally, the facility in India aims to meet the needs of the Indian, Asia Pacific and Middle Eastern markets.

Greenheck India Certification

- Underwriters Laboratory (UL)
 - Approved manufacturing location
 - Multiple UL Listed products
- CE
 - Approved manufacturing location
- AMCA
 - Member Company
 - Multiple AMCA Certified products
- ISO
 - ISO9000:2008
 - ISO14001:2004
 - OHSAS18001:2007



Our vision

To be one of the most revered companies in the worldwide HVAC and food service market space, respected for outstanding product quality market-leading innovation, superb customer service and insight, and a results-oriented, entrepreneurial culture.

Our mission

Greenheck will be a company that exceeds customer expectations and that others strive to emulate. We will be the worldwide leader in providing timely, flexible and cost-effective solutions focused on the movement, cleaning, tempering and control of air.

Delivering exceptional service

The insights and quality services we deliver help build trust and confidence in the HVAC industry. We develop outstanding leaders who work together to deliver on our promises to all of our clients. In doing so, we play a critical role in building a better working world for our people, for our clients and for our communities.

Our values

- Easy to do business with
- Ongoing investments in people and operations
- Making a difference in our community
- Mutually beneficial partnerships with sales partners and suppliers
- Integrity and professionalism
- Continuous improvement through learning, innovation and teamwork

Fans



Model RA and RA 3

Greenheck High Performance Axials, Model RA and RA 3, are direct driven axials designed for inline air ventilation in commercial, institutional or Industrial buildings. The casing design and construction are well suited to indoor or outdoor applications and can be easily installed in ducted or nonducted systems.

Features

- 215,045 CMH / 130 mm wg
- 70-86% peak total efficiencies
- EN12101-3 Certified
 - F300 - 300°C / 2 hours
 - F400 - 400°C / 2 hours

Benefits

- Reduced operating cost
- Lower sound levels
- Low maintenance / reliable operation



Model GJ

Greenheck's GreenJet® series, Model GJ, includes a range of fans to accommodate your needs for parking garage ventilation. Available in both unidirectional and reversible configurations, the GJ is designed to move high volumes of air at high efficiencies.

Features

- Aluminum airfoil propeller
- Direction vanes available to direct airflow
- EN12101-3 Certified
 - F300 - 300°C / 2 hours
 - F400 - 400°C / 2 hours

Benefits

- Reduced operating costs
- Lower sound levels
- Reliable performance



Model BSQ-M and SQ-M

Greenheck's Model BSQ-M and SQ-M centrifugal inline fan features a unique combination of installation flexibility, rugged construction, ease of service, high efficiency and low sound levels. This compact inline fan is the ideal selection for indoor clean air applications (including intake, exhaust, return or make-up air systems) where space is a prime consideration.

Features

- 20,300 CMH / 75 mm wg
- Galvanized steel housing construction
- Backward inclined centrifugal wheel

Benefits

- Reliable performance
- Installation flexibility
- Low maintenance



Model CDB

Model CDB, Greenheck's backward inclined double-width centrifugal fan, is designed for applications suitable for clean air, supply or exhaust. AMCA Licensed for Air and Sound Performance and FEI.

Features

- 150,000 CMH / 164 mm wg
- Galvanized steel with Permalock™ housing

Benefits

- Value based construction
- High operating efficiencies
- Installation savings



Dampers



Models SMD and FSD

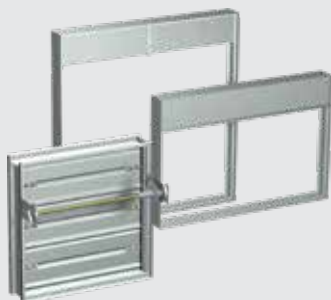
Smoke Dampers (Model SMD) and Combination Fire/Smoke Dampers (Model FSD) are designed for use in HVAC systems where emergency smoke or fire and smoke control is required.

Features

- Factory mounted sleeves and actuators
- Vertical or horizontal mounting
- Class I or II leakage ratings available
- 1½ and 3 hour resistance ratings (FSD)

Certifications

- UL 555 Listed (FSD)
- UL 555S Listed
- AMCA Certified for Air Performance



Models FD and DFD

Static (Model FD) and Dynamic (Model DFD) fire dampers are designed to protect duct penetrations and transfer openings in fire rated walls, partitions and floors. Upon temperature elevation, damper closes automatically.

Features

- Available with integral sleeve
- Vertical or horizontal mounting
- 1½ and 3 hour resistance ratings

Certifications

- UL555 Listed



Models VCD and MBD

Greenheck's commercial control dampers, Model VCD and MBD are ideal for use in buildings to regulate the flow of air in HVAC systems. These dampers can be used in intake, exhaust, and mixed air applications.

Features

- Available with factory mounted sleeves and actuators
- Galvanized steel construction
- Vertical or horizontal mounting

Certifications

- AMCA Certified for Air Performance (VCD-20)
- AMCA Certified for Air Leakage & Air Performance (VCD-23)



Project Examples

- Statue of Unity - Gujarat, India
- TCI, Adibatla - Hyderabad, India
- Blue Ridge Multi-Use Complex - Maharashtra, India
- OJI Paper - Neemrana, India
- Flexotronics - Bangalore, India
- Net Magic - Bangalore, India
- Shangrila Hotel - Bangalore, India
- Topasia - Kolkata, India
- Diamond Heritage - Kolkata, India
- Jackson Inn - Satara, India
- Reliance Global Headquarters - Mumbai, India
- Jupiter Mills - Mumbai, India
- Ruby Park - Mumbai, India
- Eastin Hotel - Ahmedabad, India
- Dell - Noida, India
- McCain Foods - Mesana, India
- World Crest Tower - Mumbai, India
- Bangalore International Airport - Bangalore, India
- Ram Niwas Parking - Jaipur, India
- Natural Fruits and Vegetables - Rajkot, India
- ESIC Hospital - Mewat, India
- Vamona Developers - Pune, India



Greenheck India Pvt. Ltd.

Corp. Office: 201-202, 2nd Floor, Landmark Cyber Park, Sector-67, Gurgaon-122018.

Ph: +91-124-4711250-256, Fax: +91-1244711263

Manufacturing Unit: Plot no. 241, Sector-3, HSIIDC Growth Centre, Bawal-123501. Dist. Rewari 123501. Ph.: +91-284266700.