



VF-A bathroom exhaust fans

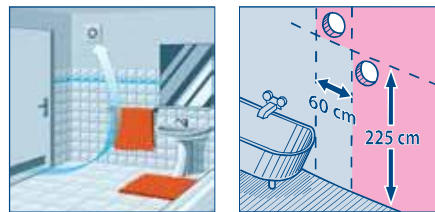
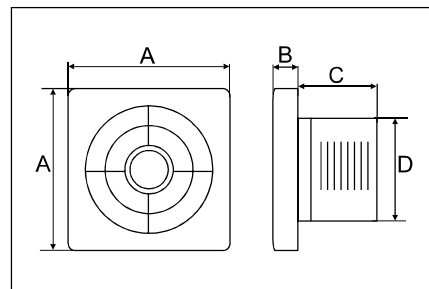
- Top grade ABS materials.
- elegant design and lower noise.
- Silicon steel motor and 100% pure copper winding
- Built-in thermo-cut-off protect the motor.
- A-8 is Eco-motor, condensor motor.

SPECIFICATIONS

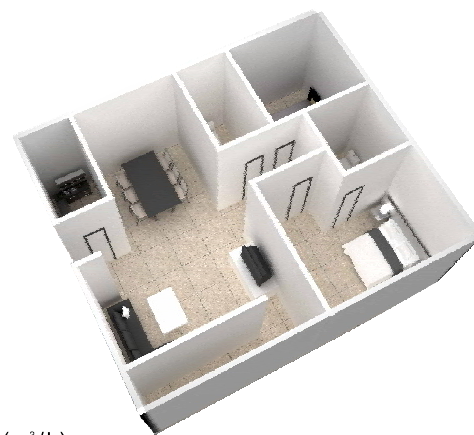
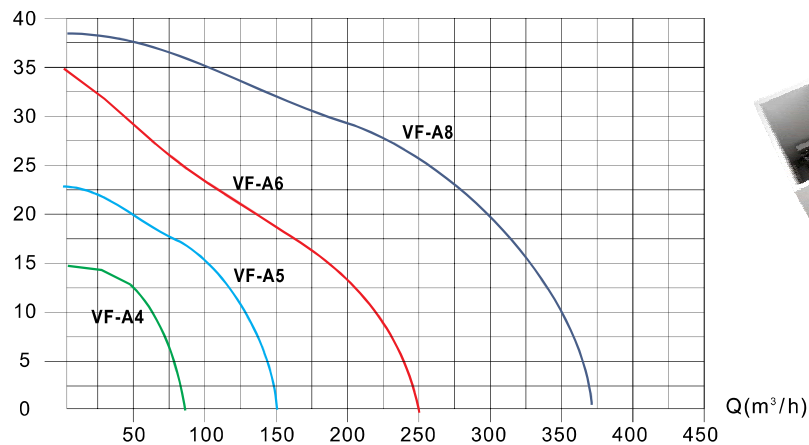
Model	Rated Voltage [V]	Input [W]	Air-flow [m ³ /h]	Noise [dB]	Size [mm]
VF-A4	220-240	15	80	33	100
VF-A5	220-240	20	150	35	120
VF-A6	220-240	25	250	37	150
VF-A8	220-240	25	370	39	200

DIMENSION(mm)

MODEL	A	B	C	D
VF-A4	150x150	37	42	98
VF-A5	182x182	43	43	118
VF-A6	209x209	45	60	148
VF-A8	261x261	73	50	196



Static pressure[Pa]





VF-A-1 bathroom exhaust fans

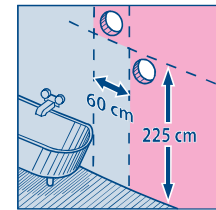
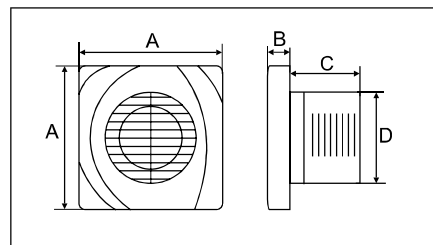
- Top grade ABS materials.
- elegant design and lower noise.
- Silicon steel motor and 100% pure copper winding
- Built-in thermo-cut-off protect the motor.
- A-8-1 is Eco-motor, condensor motor.

SPECIFICATIONS

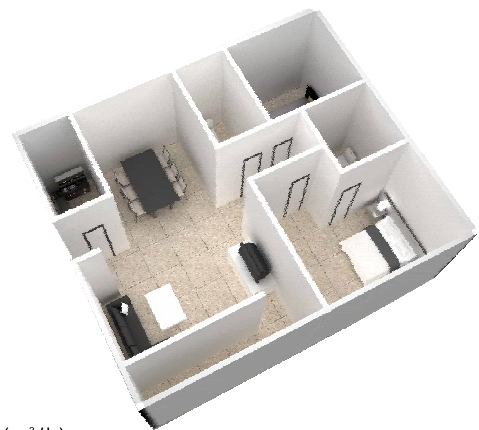
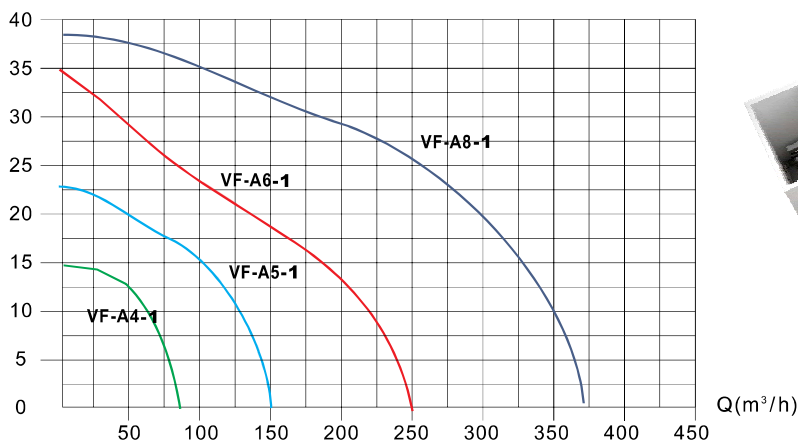
Model	Rated Voltage [V]	Input [W]	Air-flow [m ³ /h]	Noise [dB]	Size [mm]
VF-A4-1	220-240	15	80	33	100
VF-A5-1	220-240	20	150	35	120
VF-A6-1	220-240	25	250	37	150
VF-A8-1	220-240	25	370	39	200

DIMENSION(mm)

MODEL	A	B	C	D
VF-A4-1	150x150	37	42	98
VF-A5-1	182x182	43	43	118
VF-A6-1	209x209	45	60	148
VF-A8-1	261x261	73	50	196



Static pressure[Pa]





VF-A-2 bathroom exhaust fans

Features:

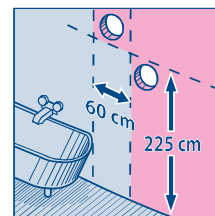
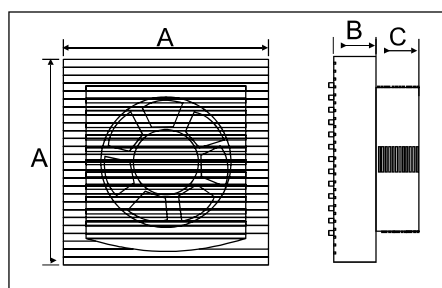
- Top grade ABS materials.
- elegant design and lower noise.
- Silicon steel motor and 100% pure copper winding
- Built-in thermo-cut-off protect the motor.
- A-8-2 is Eco-motor, condensor motor.

SPECIFICATIONS

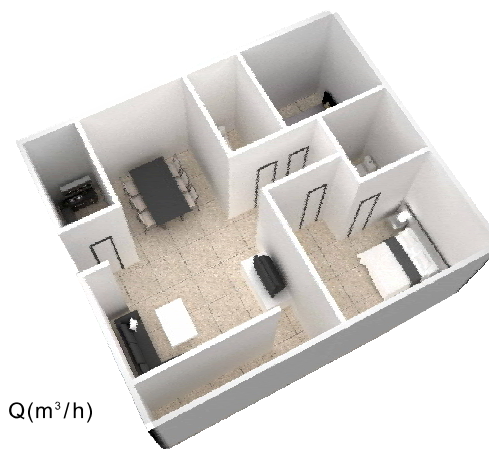
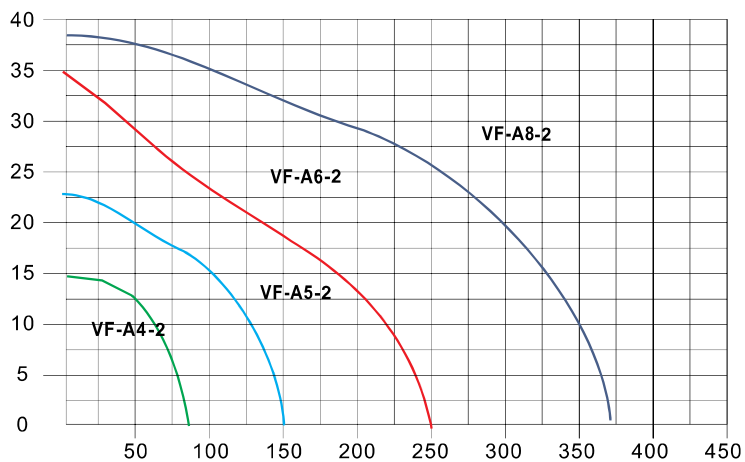
Model	Rated Voltage [V]	Input [W]	Air-flow [m ³ /h]	Noise [dB]	Size [mm]
VF-A4-2	220-240	15	80	33	100
VF-A5-2	220-240	20	150	35	120
VF-A6-2	220-240	25	250	37	150
VF-A8-2	220-240	25	370	39	200

DIMENSION(mm)

MODEL	A	B	C	D
VF-A4-2	150x150	37	42	98
VF-A5-2	182x182	43	43	118
VF-A6-2	209x209	45	60	148
VF-A8-2	261x261	73	50	



Static pressure[Pa]





VF-MV Mixflow inline blower

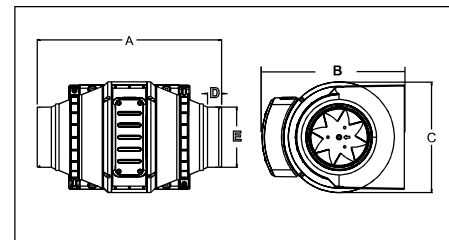
The MV Series is a mixed flow inline exhaust fan in various sizes.

Specially designed for insatalling ventilation system with high pressure, strong airflow and low noise levels.

Energy saving motor with ball bearing for long life operation

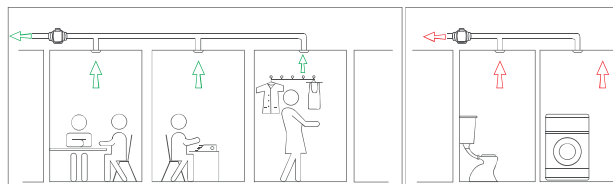
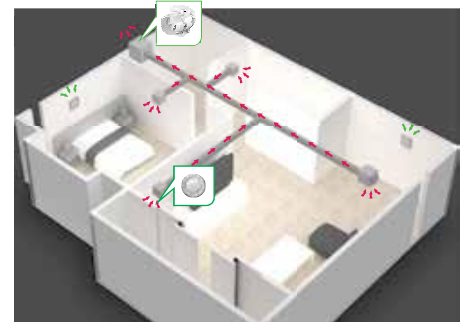
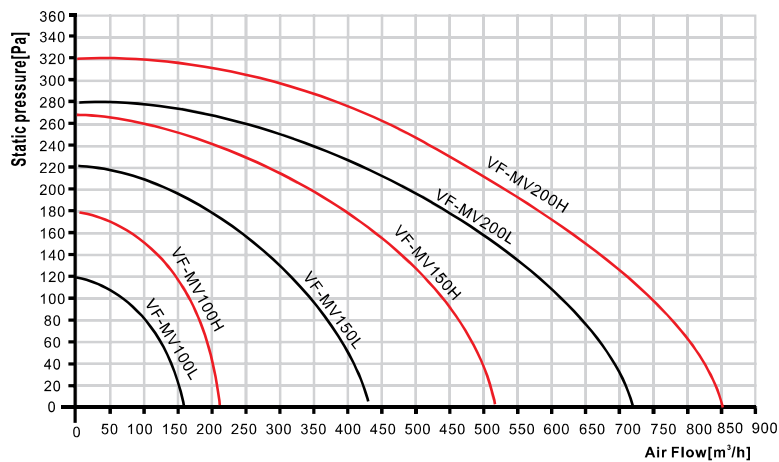
SPECIFICATIONS

Model	Rated Voltage [V]	Input [W]	Air-flow [m³/h]	Noise [dB]	Duct Size [mm]
MV100	220-240	30	220	41	97
MV125	220-240				
MV150	220-240	50	530	45	145
MV200	220-240				



DIMENSION(mm)

MODEL	A	B	C	D	E
MV100	297	234	177	22	97
MV125					
MV150	307	256	200	78	145
MV200					



Ceiling Mounted Exhaust Fan Applications Scenarios



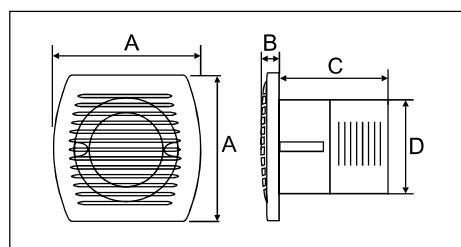
VF-B bathroom exhaust fans, ultra thin panel

Features:

- Top grade ABS materials.
- elegant design and lower noise.
- Silicon steel motor and 100% pure copper winding
- Built-in thermo-cut-off protect the motor.
- B-8 is Eco-motor, condensor motor.

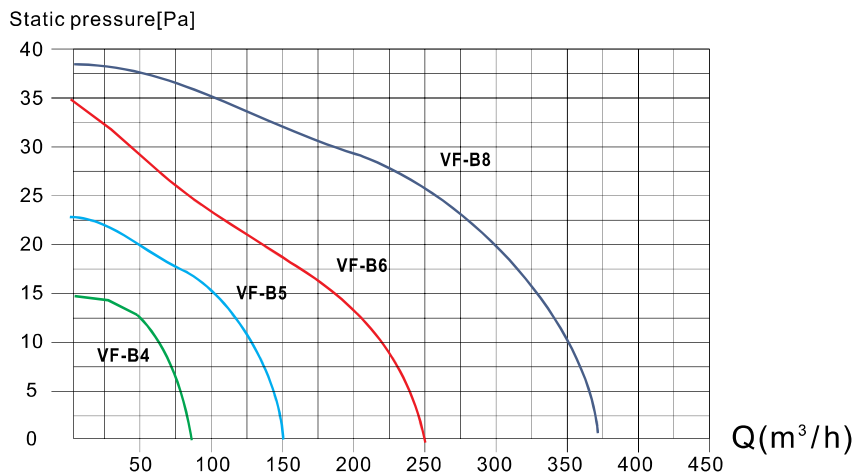
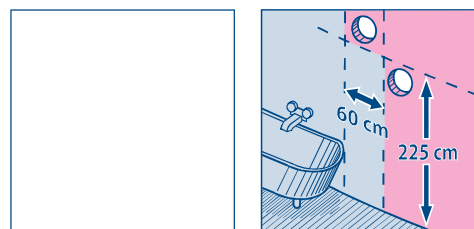
SPECIFICATIONS

Model	Rated Voltage [V]	Input [W]	Air-flow [m ³ /h]	Noise [dB]	Size [mm]
VF-B4	220-240	15	80	33	100
VF-B5	220-240	20	150	35	120
VF-B6	220-240	25	250	37	150
VF-B8	220-240	25	370	39	200



DEMENSION(mm)

MODEL	A	B	C	D
VF-B4	140x140	7	88	98
VF-B5	170x170	12	98	118
VF-B6	190x190	13	112	148
VF-B8	257x257	8	129	196





VF-B bathroom exhaust fans, ultra thin panel

Features:

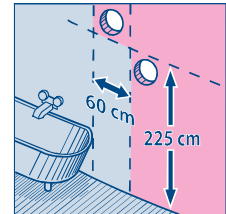
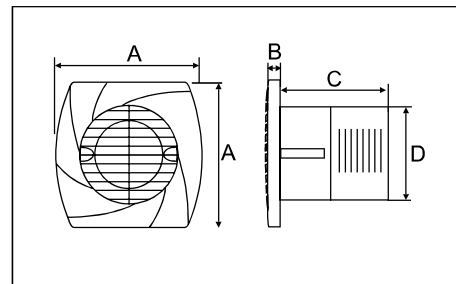
- Engineering PP plastic body and shutters.
- elegant design and lower noise.
- Silicon steel motor and 100% pure copper winding
- Built-in thermo-cut-off protect the motor.
- B-8-1 is Eco-motor, condensor motor.

SPECIFICATIONS

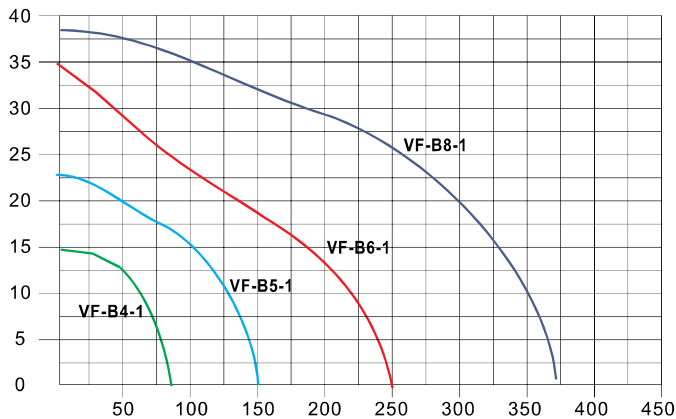
Model	Rated Voltage [V]	Input [W]	Air-flow [m ³ /h]	Noise [dB]	Size [mm]
VF-B4-1	220-240	15	80	33	100
VF-B5-1	220-240	20	150	35	120
VF-B6-1	220-240	25	250	37	150
VF-B8-1	220-240	25	370	39	200

DEMENSION(mm)

MODEL	A	B	C	D
VF-B4-1	140x140	11	88	98
VF-B5-1	170x170	16	98	118
VF-B6-1	190x190	15	112	148
VF-B8-1	257x257	8	129	196



Static pressure[Pa]



Q(m³/h)

